



PARAMOUNT REALTY

275 HESS BOULEVARD

275 HESS BOULEVARD, LANCASTER, PA 17601

Lancaster County | GLA: ± 12,200 SF



- 2-Story office building totaling 12,200 SF with 6,000 SF floor plates
- Façade renovations to include new roof, parking lot lights, landscaping, pylon signage & directional signage
- 55 parking spaces

DEMOGRAPHICS	1 Mile	3 Mile	5 Mile
Population:	4,490	99,744	180,324
Avg. HH Income:	\$103,827	\$88,961	\$91,659
Households:	1,704	39,318	70,263

ARLENE GRAY agray@paramountrealty.com
 KRISTI PENNINGTON kpennington@paramountrealty.com

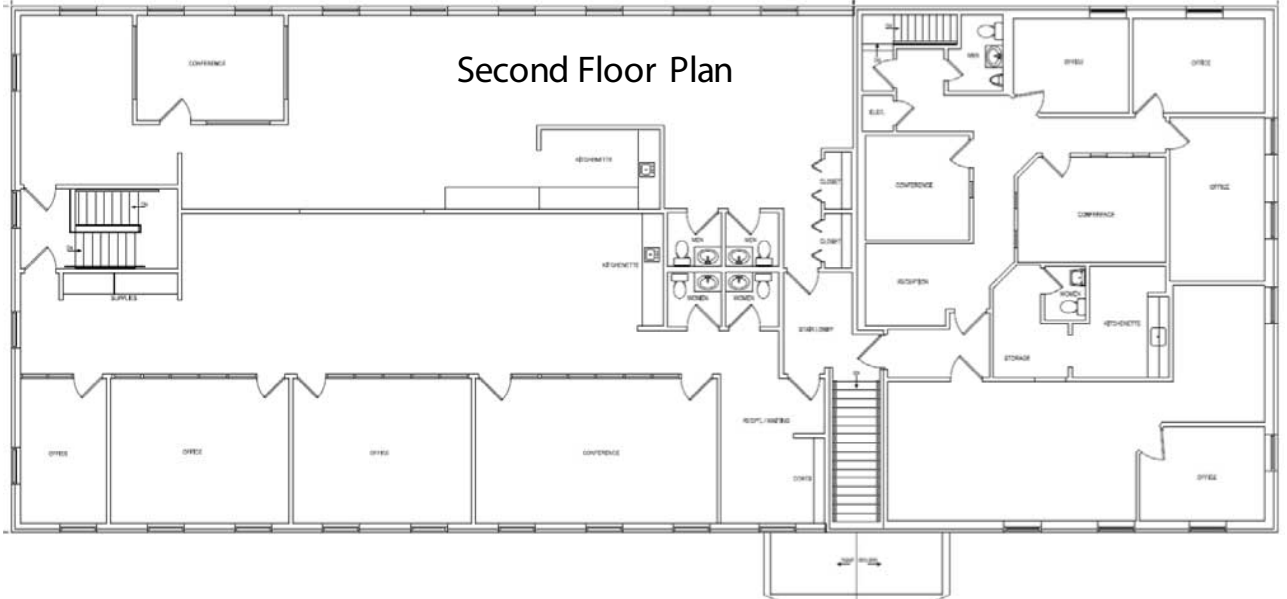
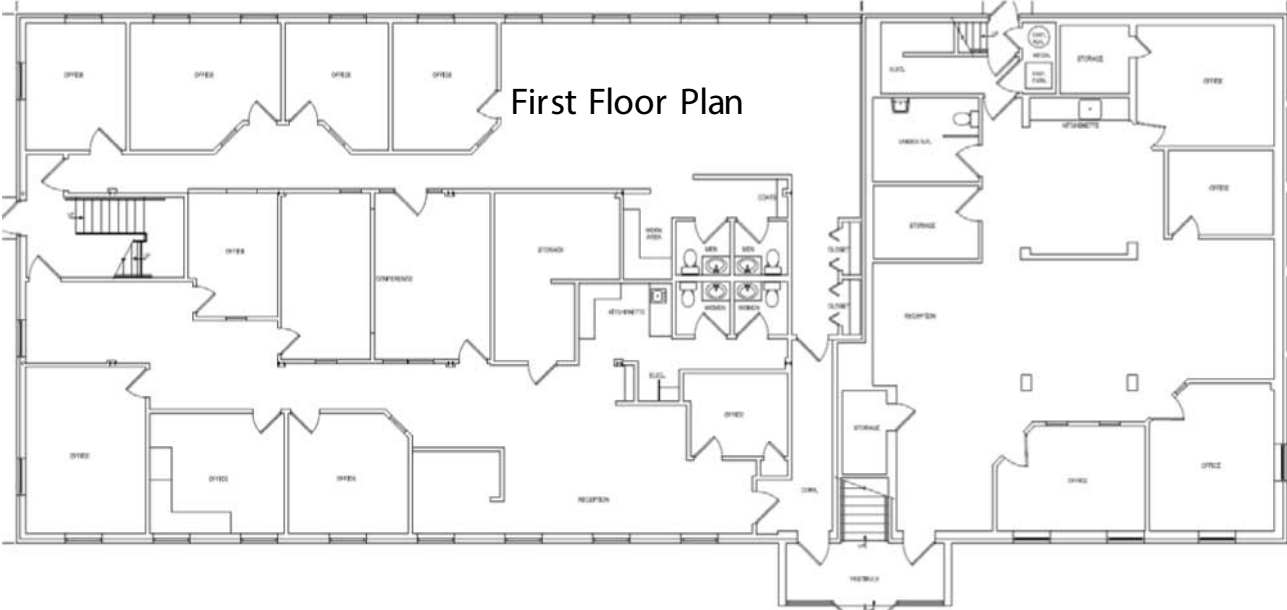
120 North Pointe Blvd., Suite 301, Lancaster, PA 17601
 717-569-9373 | paramountrealty.com

275 HESS BOULEVARD
FOR LEASE

Subject To Change

Bldg. Ambassador Advisors

12,200 SF



ARLENE GRAY agray@paramountrealty.com
KRISTI PENNINGTON kpennington@paramountrealty.com

120 North Pointe Blvd., Suite 301, Lancaster, PA 17601
717-569-9373 | paramountrealty.com



PARAMOUNT
REALTY

275 HESS BOULEVARD
275 HESS BOULEVARD, LANCASTER, PA 17601



ARLENE GRAY agray@paramountrealty.com
KRISTI PENNINGTON kpennington@paramountrealty.com

120 North Pointe Blvd., Suite 301, Lancaster, PA 17601
717-569-9373 | paramountrealty.com