



**PARAMOUNT**  
REALTY

# AIRPORT ROAD RETAIL/OFFICE CENTER

100 AIRPORT ROAD , LITITZ, PA 17543  
Lancaster County | GLA: ± 21,376 SF



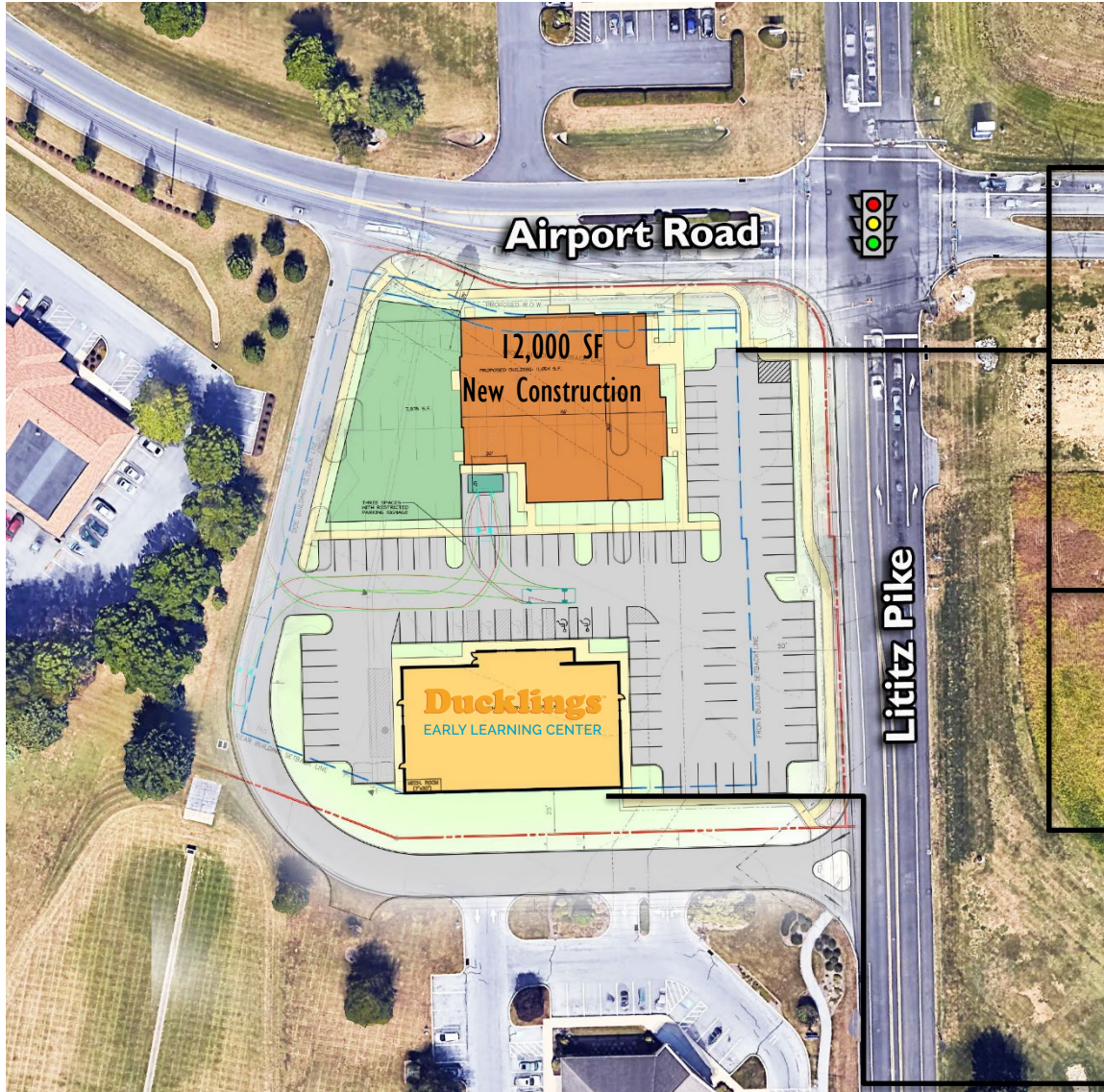
- Former 9,376 SF Hoss's Steakhouse situated on 2.5+ acres
- ±12,000 SF expansion opportunity
- 162 existing parking + 110 with possible expansion
- Ideal location for daycare, retail, restaurant, medical, dental or professional office

DEMOGRAPHICS	1 Mile	3 Mile	5 Mile
<b>Population:</b>	4,728	46,106	109,811
<b>Avg. HH Income:</b>	\$134,579	\$119,370	\$106,124
<b>Households:</b>	3,446	17,978	64,048

ARLENE GRAY [agray@paramountrealty.com](mailto:agray@paramountrealty.com)  
KRISTI PENNINGTON [kpennington@paramountrealty.com](mailto:kpennington@paramountrealty.com)

120 North Pointe Blvd., Suite 301, Lancaster, PA 17601  
717-569-9373 | [paramountrealty.com](http://paramountrealty.com)

100 W. AIRPORT ROAD, LITITZ  
FOR LEASE



\* Renderings subject to change



**PARAMOUNT**  
REALTY

**100 AIRPORT ROAD**  
100 AIRPORT ROAD, LITITZ, PA 17543



ARLENE GRAY [agray@paramountrealty.com](mailto:agray@paramountrealty.com)  
KRISTI PENNINGTON [kpennington@paramountrealty.com](mailto:kpennington@paramountrealty.com)

120 North Pointe Blvd., Suite 301, Lancaster, PA 17601  
717-569-9373 | [paramountrealty.com](http://paramountrealty.com)