

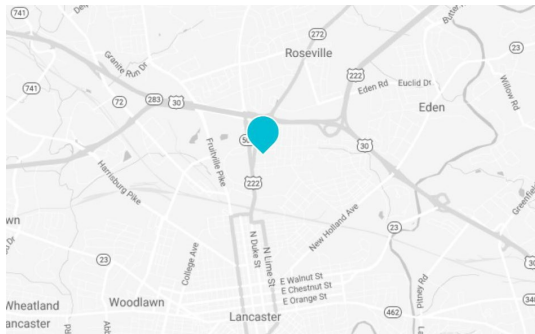


# PARAMOUNT REALTY

# 1525 OREGON PIKE

1525 OREGON PIKE, SUITE 1701, LANCASTER, PA 17601

Lancaster County | GLA: ± 1,000 SF



- Professional office centrally located on Oregon Pike (Route 222)
- Part of Oregon Commons office complex
- 1st floor suite includes 3 private offices, large reception area and storage room

DEMOGRAPHICS	1 Mile	3 Mile	5 Mile
<b>Population:</b>	12,466	108,015	179,892
<b>Avg. HH Income:</b>	\$87,642	\$85,760	\$95,442
<b>Households:</b>	4,940	42,969	70,692

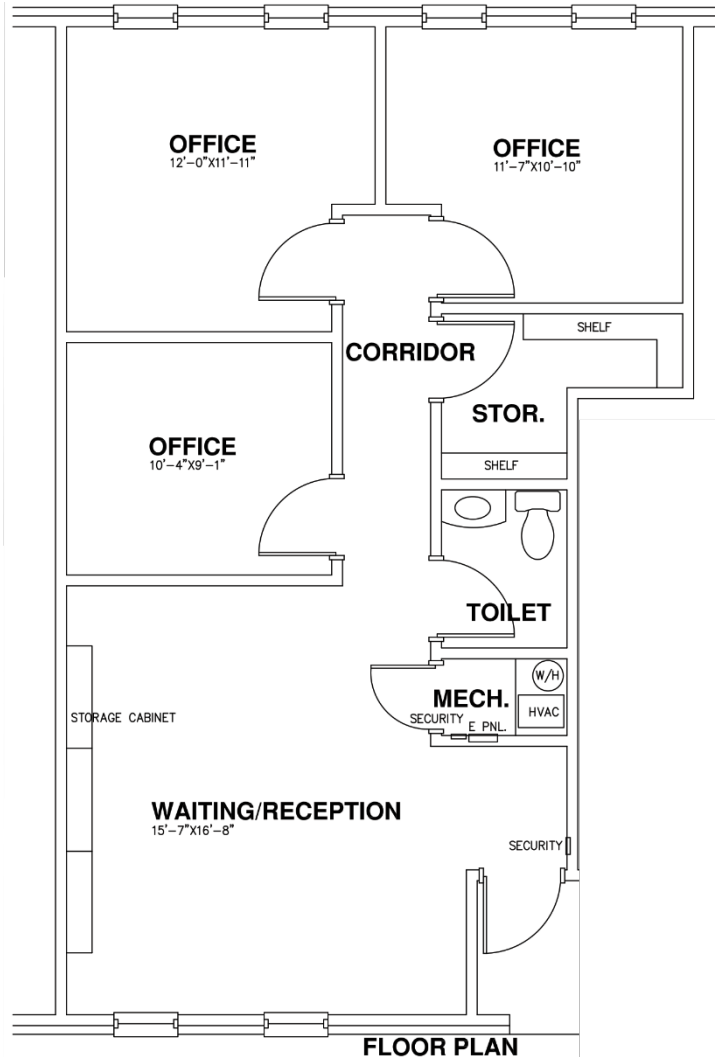




# PARAMOUNT REALTY

## 1525 OREGON PIKE

1525 OREGON PIKE, SUITE 1701, LANCASTER, PA 17601







**PARAMOUNT**  
REALTY

**1525 OREGON PIKE**

1525 OREGON PIKE, SUITE 1701, LANCASTER, PA 17601



BRIAN FINLEY, CMA [bfmley@paramountrealty.com](mailto:bfmley@paramountrealty.com)

120 North Pointe Blvd., Suite 301, Lancaster, PA 17601  
717-569-9373 | [paramountrealty.com](http://paramountrealty.com)