



# PARAMOUNT REALTY

## CVS/PHARMACY

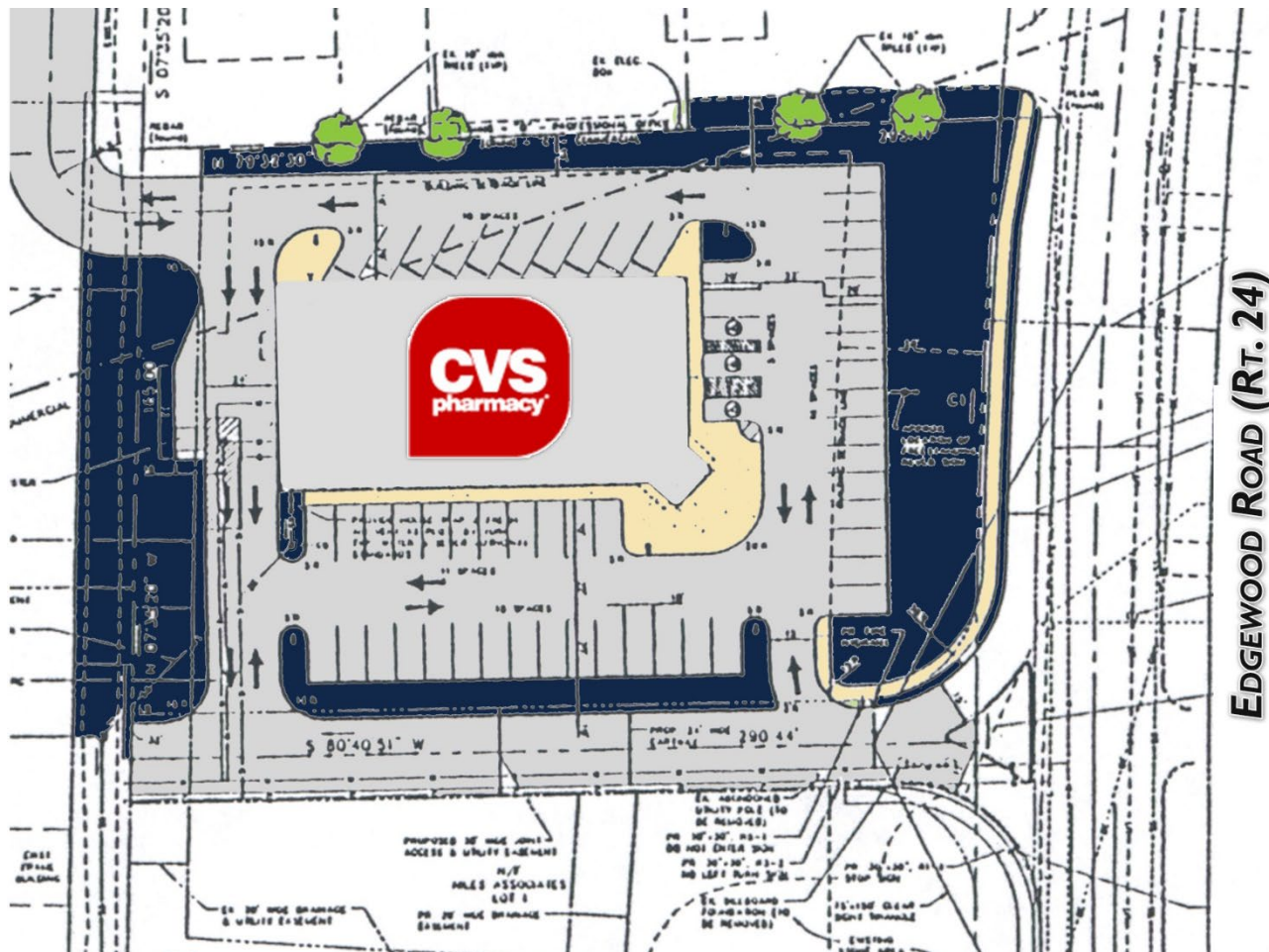
820 EDGEWOOD ROAD, YORK, PA 17402

York County | GLA: ± 10,722 SF



- 10,722 SF CVS/Pharmacy located at the intersection of West Chocolate Avenue and Hockersville Road with combined traffic counts exceeding 21,900 vehicles per day
- Located near Hershey Park and Penn State Hershey Medical Center

DEMOGRAPHICS	<u>1 Mile</u>	<u>3 Mile</u>	<u>5 Mile</u>
<b>Population:</b>	10,478	59,324	152,350
<b>Avg. HH Income:</b>	\$109,673	\$102,606	\$96,152
<b>Households:</b>	4,448	23,375	59,641



EDGEWOOD ROAD (RT. 24)

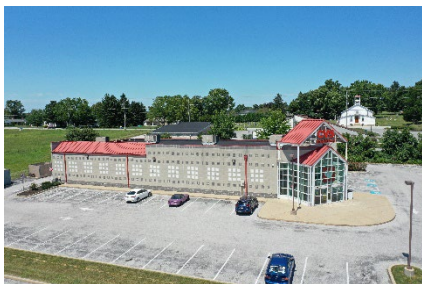
CVS/PHARMACY  
100% LEASED

Subject To Change

1 CVS/Pharmacy

10,722 SF

The information herein (including all faxes pertaining to the same) has been obtained from sources deemed reliable. While we do not doubt its accuracy, we have not verified and make no guarantee, warranty, or representation about it. It is your responsibility to independently confirm its accuracy and completeness and is subject to correction or can be withdrawn without notice.



ARLENE GRAY [agray@paramountrealty.com](mailto:agray@paramountrealty.com)  
KRISTI PENNINGTON [kpennington@paramountrealty.com](mailto:kpennington@paramountrealty.com)

120 North Pointe Blvd., Suite 301, Lancaster, PA 17601  
717-569-9373 | [paramountrealty.com](http://paramountrealty.com)



**PARAMOUNT**  
REALTY

**CVS/PHARMACY**

820 EDGEWOOD ROAD, YORK, PA 17402



ARLENE GRAY [agray@paramountrealty.com](mailto:agray@paramountrealty.com)  
KRISTI PENNINGTON [kpennington@paramountrealty.com](mailto:kpennington@paramountrealty.com)

120 North Pointe Blvd., Suite 301, Lancaster, PA 17601  
717-569-9373 | [paramountrealty.com](http://paramountrealty.com)