



PARAMOUNT REALTY

FORMER CVS/PHARMACY

165 South Richland Avenue, York, PA 17404

YORK COUNTY | GLA: ±10,158 SF



- 10,158 SF Former CVS/Pharmacy located at the intersection of West Princess Street & South Richland Avenue in York, Pennsylvania
- Signalized intersection with combined traffic counts exceeding 19,900 vehicles per day
- Nearby dense residential community, schools and businesses

DEMOGRAPHICS	1 Mile	3 Mile	5 Mile
Population	24,715	46,183	171,975
Average HH Income	\$79,925	\$85,068	\$99,265
Households	8,950	33,394	60,910

ARLENE GRAY
KRISTI PENNINGTON
ASHLEE LEHMAN

agray@paramountrealty.com
kpennington@paramountrealty.com
ashlee.lehman@paramountrealty.com

120 North Pointe Blvd., Suite 301, Lancaster, PA 17601
717-569-9373 | paramountrealty.com

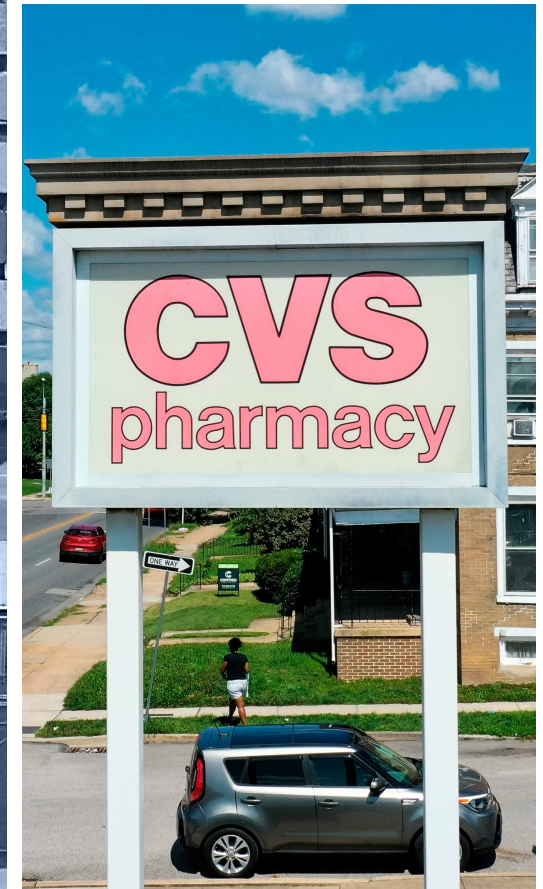


FORMER CVS/PHARMACY
FOR LEASE

Subject To Change

1 AVAILABLE

10,158 SF



ARLENE GRAY
KRISTI PENNINGTON
ASHLEE LEHMAN

agray@paramountrealty.com
kpennington@paramountrealty.com
ashlee.lehman@paramountrealty.com

120 North Pointe Blvd. | Lancaster, PA 17601
717-569-9373 | paramountrealty.com

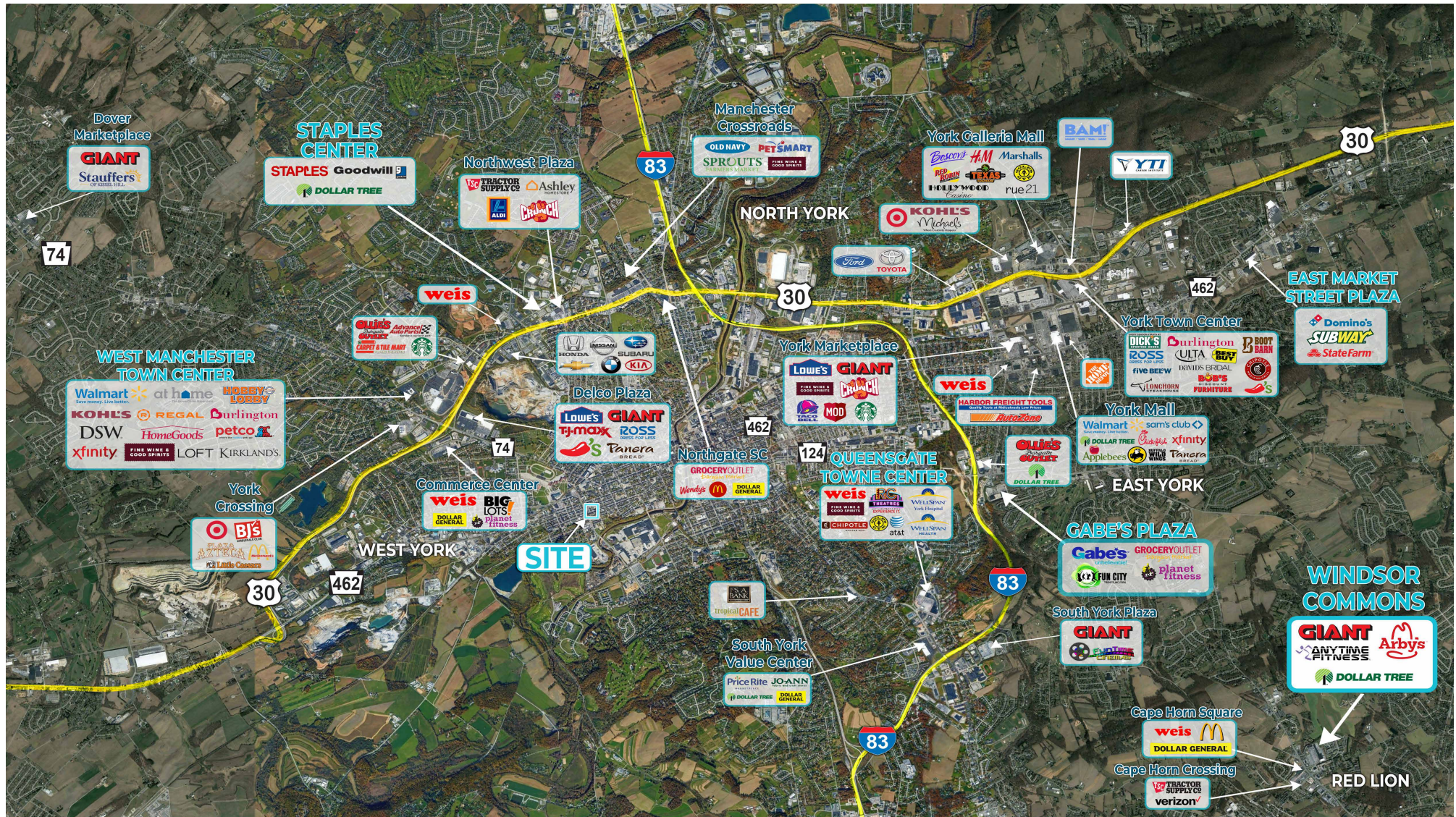


PARAMOUNT REALTY

FORMER CVS/PHARMACY

165 South Richland Avenue, York, PA 17404

YORK COUNTY | GLA: ±10,158 SF



ARLENE GRAY
KRISTI PENNINGTON
ASHLEE LEHMAN

agray@paramountrealty.com
kpennington@paramountrealty.com
ashlee.lehman@paramountrealty.com

120 North Pointe Blvd., Suite 301, Lancaster, PA 17601
717-569-9373 | paramountrealty.com