



PARAMOUNT
REALTY

STOUGHTON TOWN CENTER

638-686 WASHINGTON STREET, STOUGHTON, MA 02072

Norfolk County | GLA: ± 75,790 SF



- Neighborhood Retail center anchored by Price Rite
- Located just 16 miles south of Boston.
- Densely populated with over 162,000 people within a 5 miles radius
- Nearby Route 24 and the I-93 & I-95 interchange with direct access to downtown Boston

DEMOGRAPHICS	<u>1 Mile</u>	<u>3 Mile</u>	<u>5 Mile</u>
Population:	11,160	48,362	162,043
Avg. HH Income:	\$127,280	\$152,067	\$148,346
Households:	4,342	18,850	59,663

ARLENE GRAY agray@paramountrealty.com
KRISTI PENNINGTON kpennington@paramountrealty.com

120 North Pointe Blvd., Suite 301, Lancaster, PA 17601
717-569-9373 | paramountrealty.com

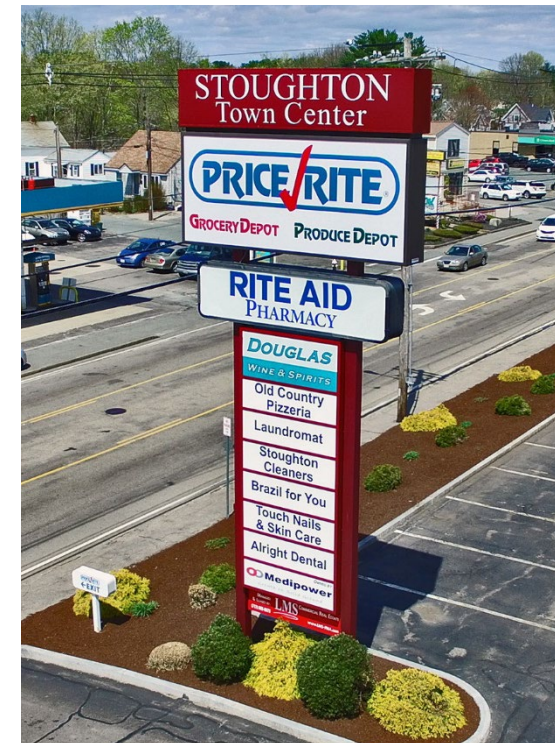
STOUGHTON TOWN CENTER FOR LEASE

Subject To Change

1	Planet Fitness	18,052 SF
3	Touch Nails	1,640 SF
4	Price Rite	35,686 SF
5	Old Country Pizzeria	2,529 SF
6	Mac-Gray Laundromat	2,627 SF
7-10	New World Wine & Spirits	9,480 SF
11	Stoughton Cleaners	1,840 SF
12	Alright Dental	1,440 SF
13	Bank of America ATM	Kiosk
14	Sonic	2,500 SF



The information herein (including all taxes pertaining to the space) has been obtained from sources deemed reliable. While we do not doubt its accuracy, we have not verified and make no warranty, express or implied, as to its accuracy, and completeness and is subject to correction or can be withdrawn without notice.



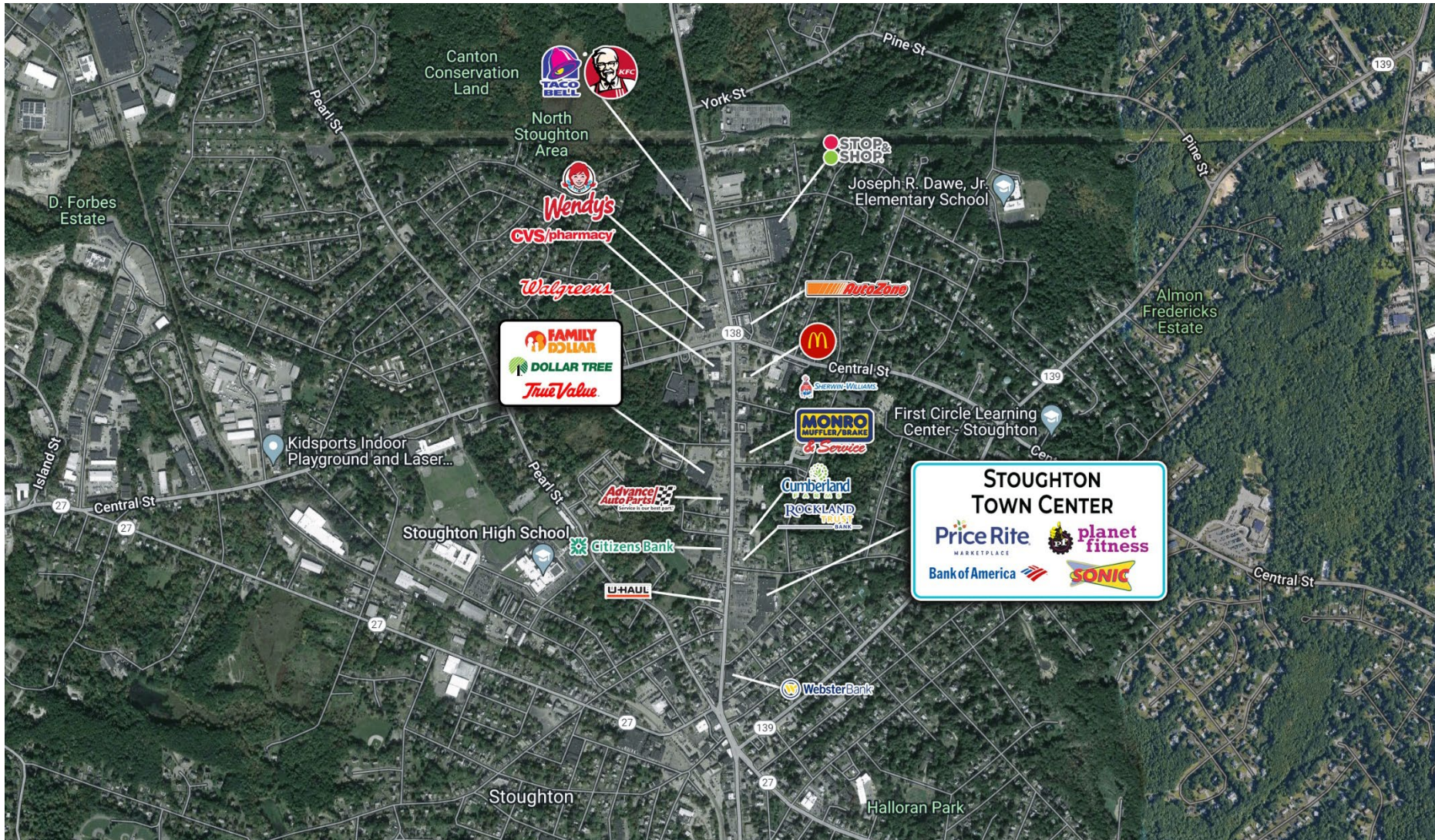
ARLENE GRAY agray@paramountrealty.com
KRISTI PENNINGTON kpennington@paramountrealty.com

120 North Pointe Blvd., Suite 301, Lancaster, PA 17601
717-569-9373 | paramountrealty.com



PARAMOUNT
REALTY

STOUGHTON TOWN CENTER
638-686 WASHINGTON STREET, STOUGHTON, MA 02072



ARLENE GRAY agray@paramountrealty.com
KRISTI PENNINGTON kpennington@paramountrealty.com

120 North Pointe Blvd., Suite 301, Lancaster, PA 17601
717-569-9373 | paramountrealty.com