



**PARAMOUNT**  
REALTY

# WALL TOWNSHIP MIXED USE

MIXED USE DEVELOPMENT - Corner of Route 35 & Route 34, Wall, NJ  
MONMOUTH COUNTY | GLA: xxx,000 SF



- New Mixed-Use Development will include Upscale Residential Townhomes
- Up to 18,000 SF Ground Retail
- Pads Available
- Excellent visibility on Route 34 & Route 35
- 29,063 Average Daily Traffic Count on Route 34
- 36,401 Average Daily Traffic Count on Route 35
- Local retailers include Whole Foods, Shoprite, ACME, ACE, McDonalds

DEMOGRAPHICS	1 Mile	3 Mile	5 Mile
Population	7,483	62,566	132,870
Average HH Income	\$215,801	\$197,599	\$179,441
Households	3,022	25,380	53,996

JASON FOX [jfox@paramountrealty.com](mailto:jfox@paramountrealty.com)  
JORDAN KORRIS [jkorris@paramountrealty.com](mailto:jkorris@paramountrealty.com)

1195 Route 70, Lakewood, NJ 08701  
732-886-1500 | [paramountrealty.com](http://paramountrealty.com)







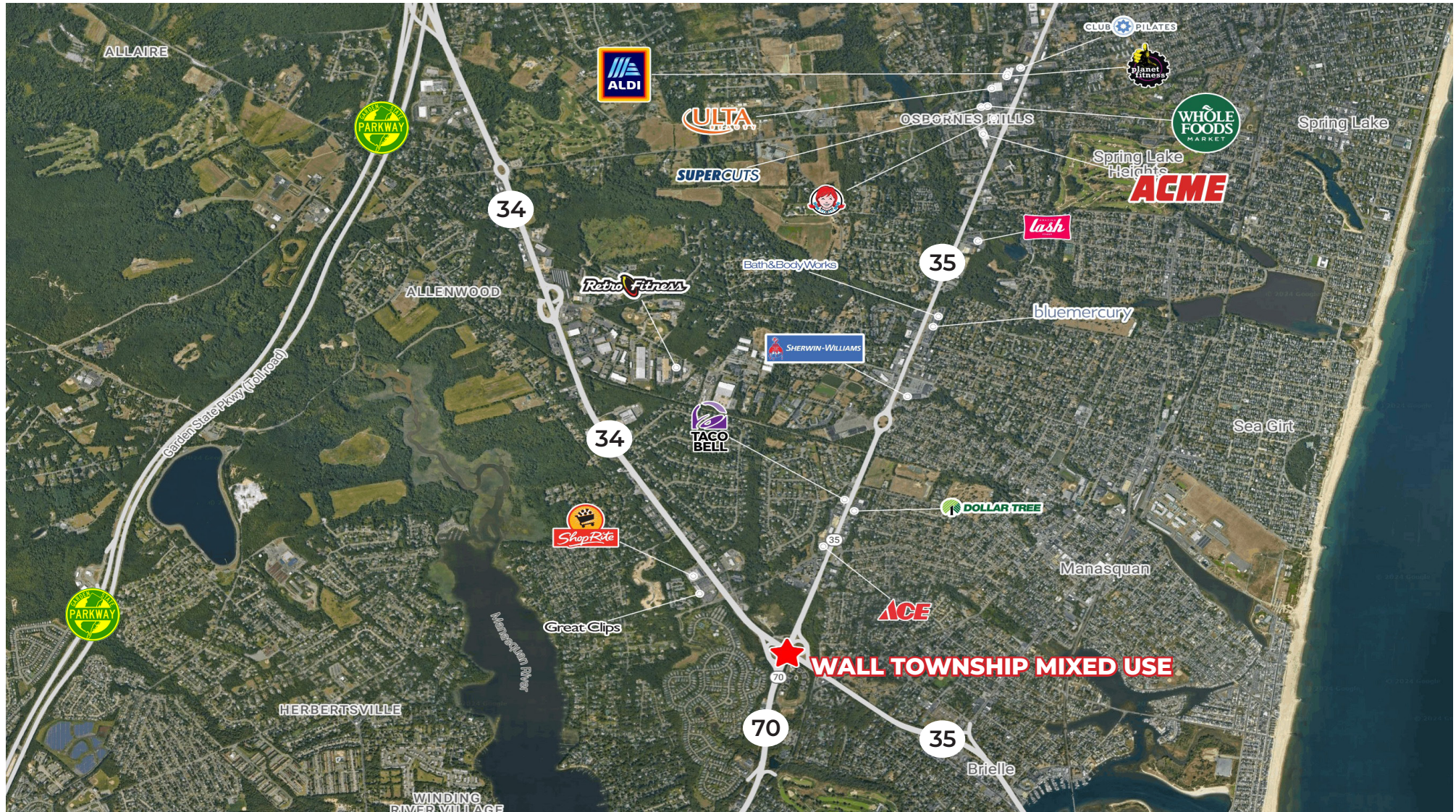


**PARAMOUNT**  
REALTY

# WALL TOWNSHIP MIXED USE

MIXED USE DEVELOPMENT - Corner of Route 35 & Route 34, Wall, NJ

MONMOUTH COUNTY | GLA: xxx,000 SF



JASON FOX [jfox@paramountrealty.com](mailto:jfox@paramountrealty.com)  
JORDAN KORRIS [jkorris@paramountrealty.com](mailto:jkorris@paramountrealty.com)

1195 Route 70, Lakewood, NJ 08701  
732-886-1500 | [paramountrealty.com](http://paramountrealty.com)